

Nomads Notes



Comprehensive Travel Diary Software

Instruction Manual Journal Entries

www.nomadsnotes.com

for any further questions or issues please contact
gail@motorhominglifestyle.com

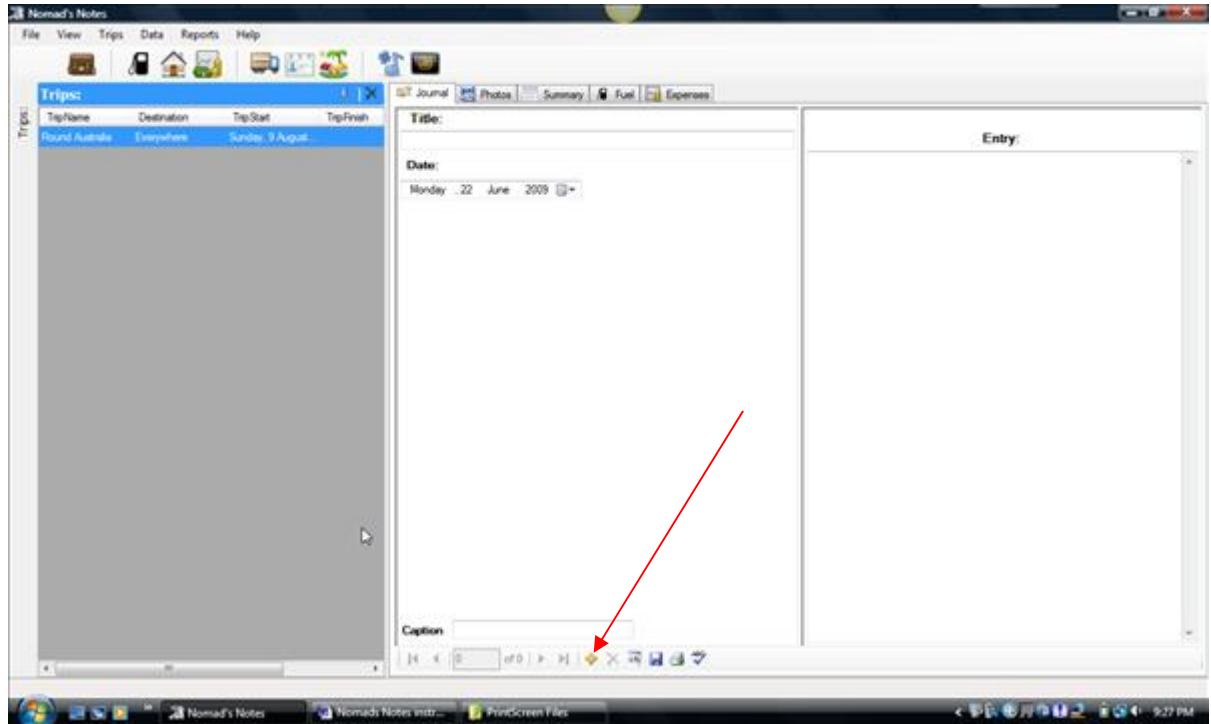
Table of Contents

Add a Journal entry	3
Add a Photo to your Journal entry	5
Edit a Journal Entry	6
Change the Photo on a journal entry	7
Inserting a missed Journal Entry	8
Delete a journal entry	8

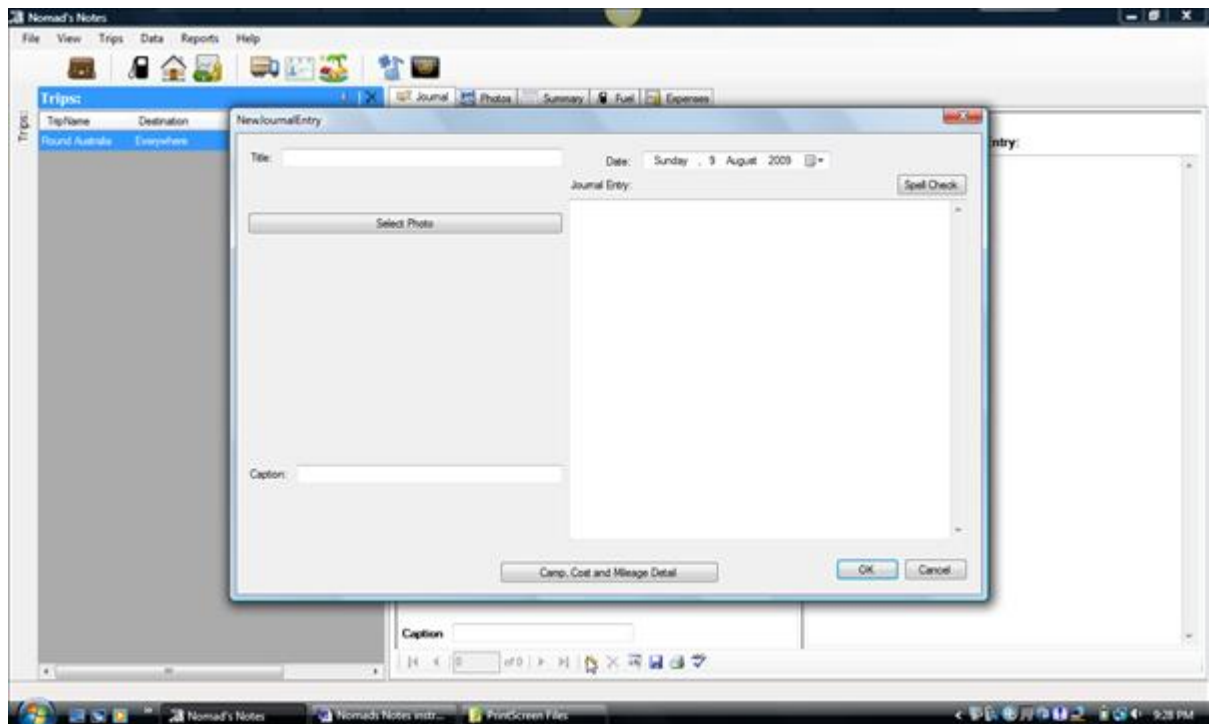
Add a Journal entry

Next you will want to add a journal entry after your first day of travel. The journal tab is the default tab and will be the one that is open when you open the program. Please do not type your daily journal entry straight into this screen as this will not save.

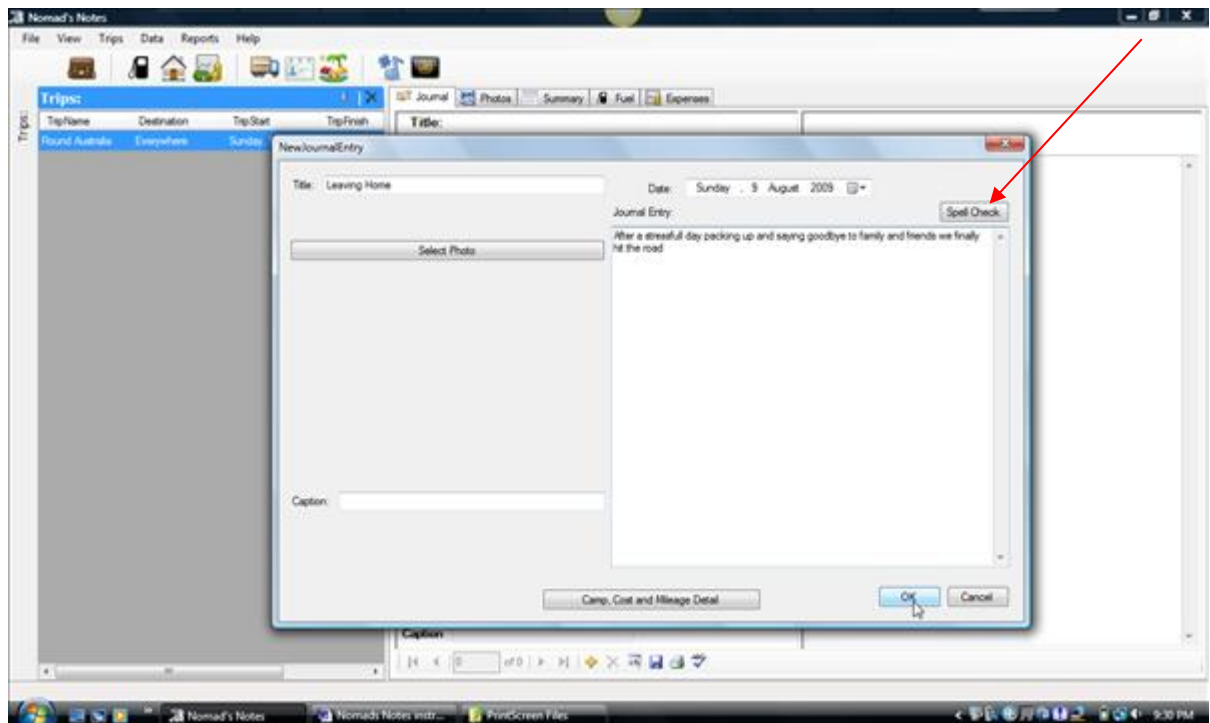
You will need to first click on the [yellow plus sign](#) at the bottom of the screen



A "new Journal entry" screen will open up.

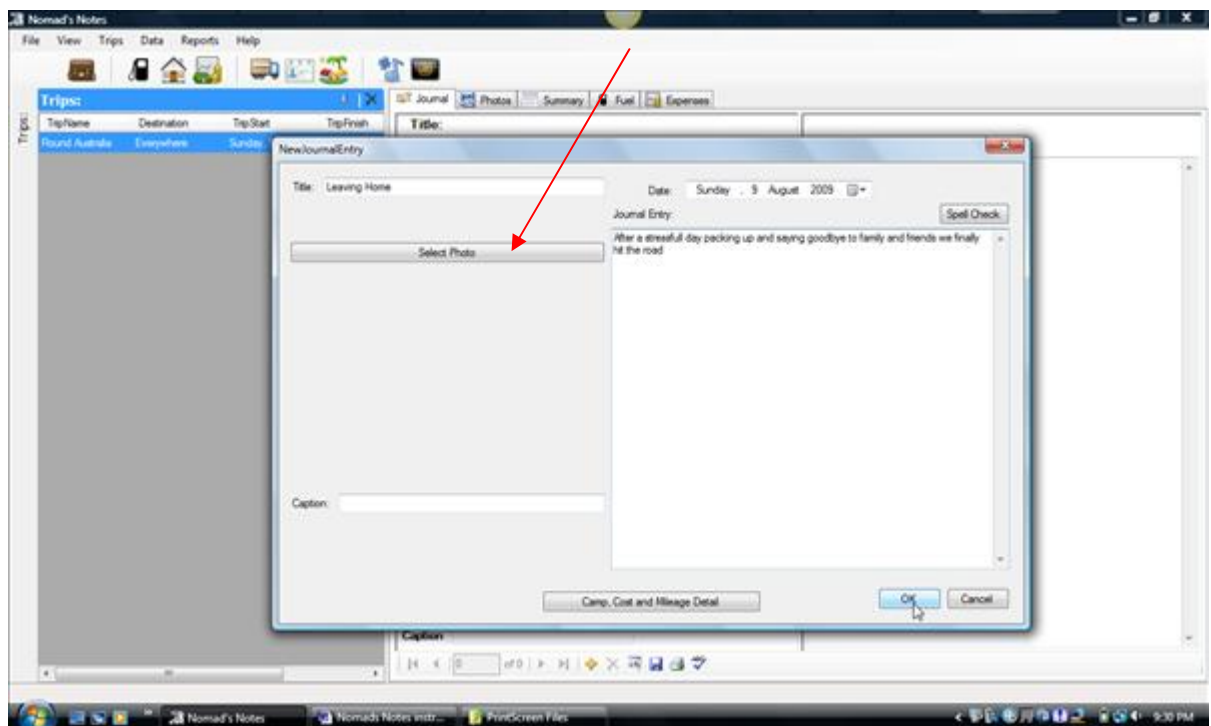


Enter a title, select the correct date and type in your journal entry. If you need to check the spelling click on [Spell Check](#) at the top of the screen.

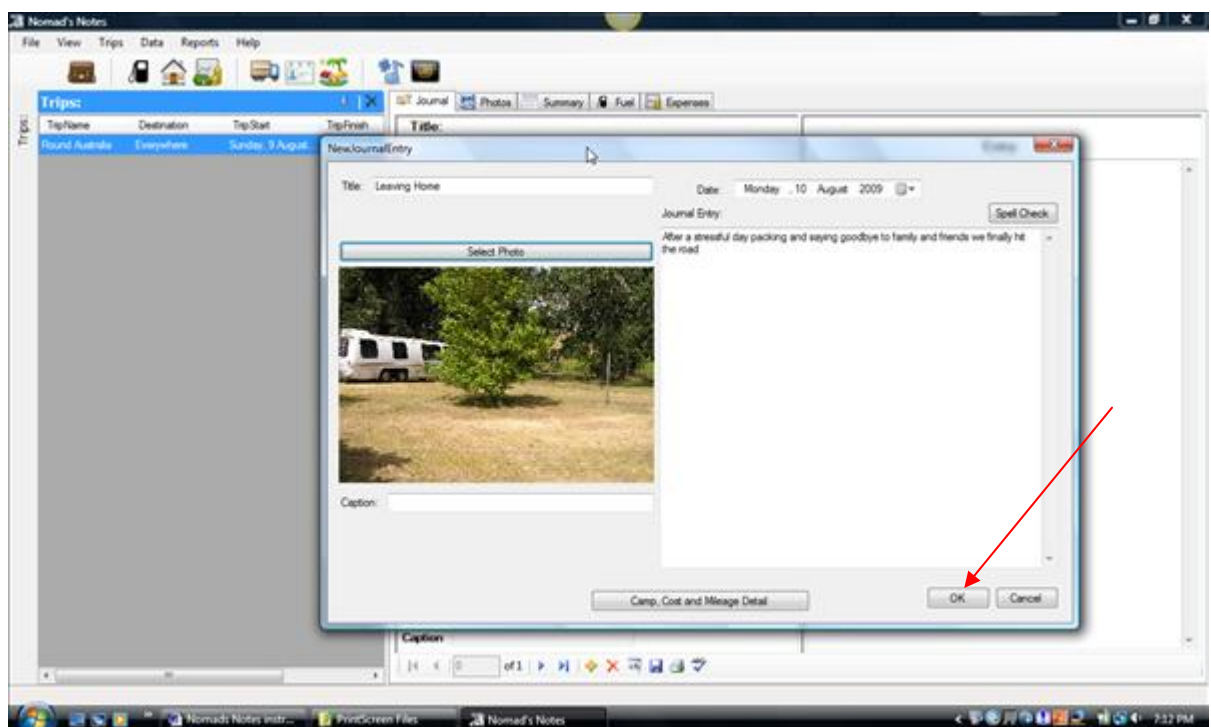


Add a Photo to your Journal entry

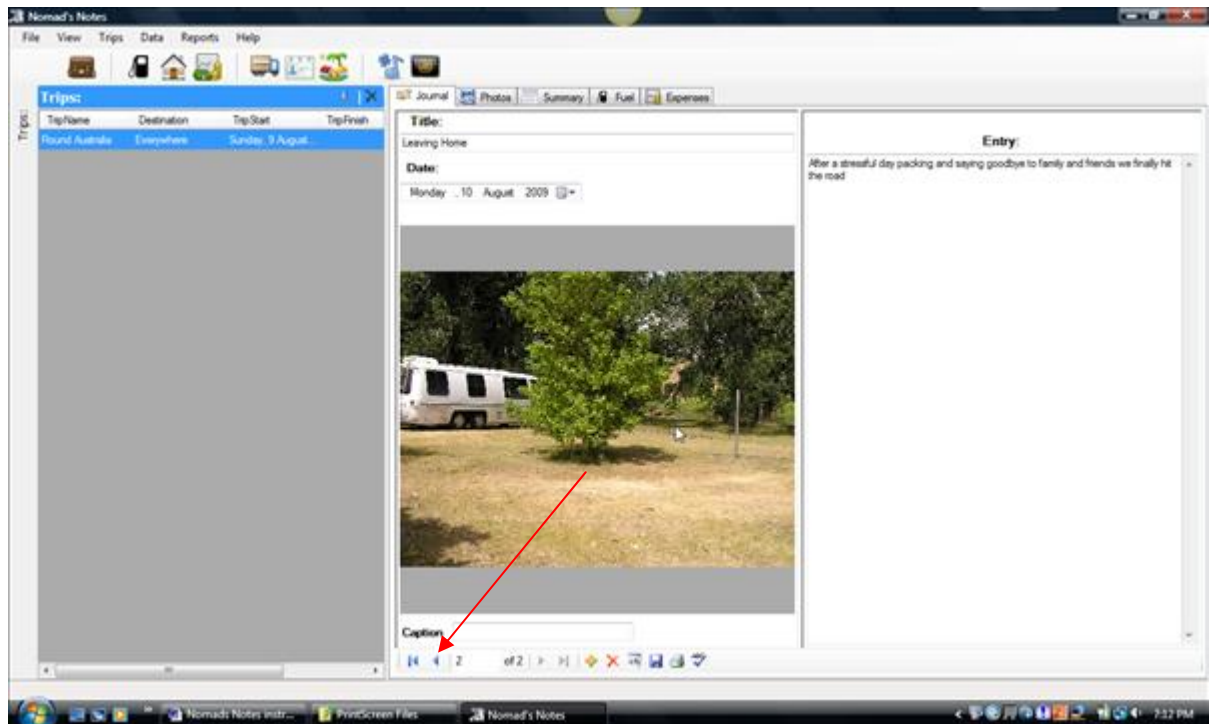
From the New Journal Entry screen (see above) click on [Select Photo](#)



Navigate your way to where your photos are stored on your hard drive and select the photo you want to insert in your journal entry.
Click [Open](#) and the photo will insert into the journal entry
Click [OK](#) when finished



Once you have several journal entries you can scroll through them with the left and right arrows at the bottom of the screen



Edit a Journal Entry

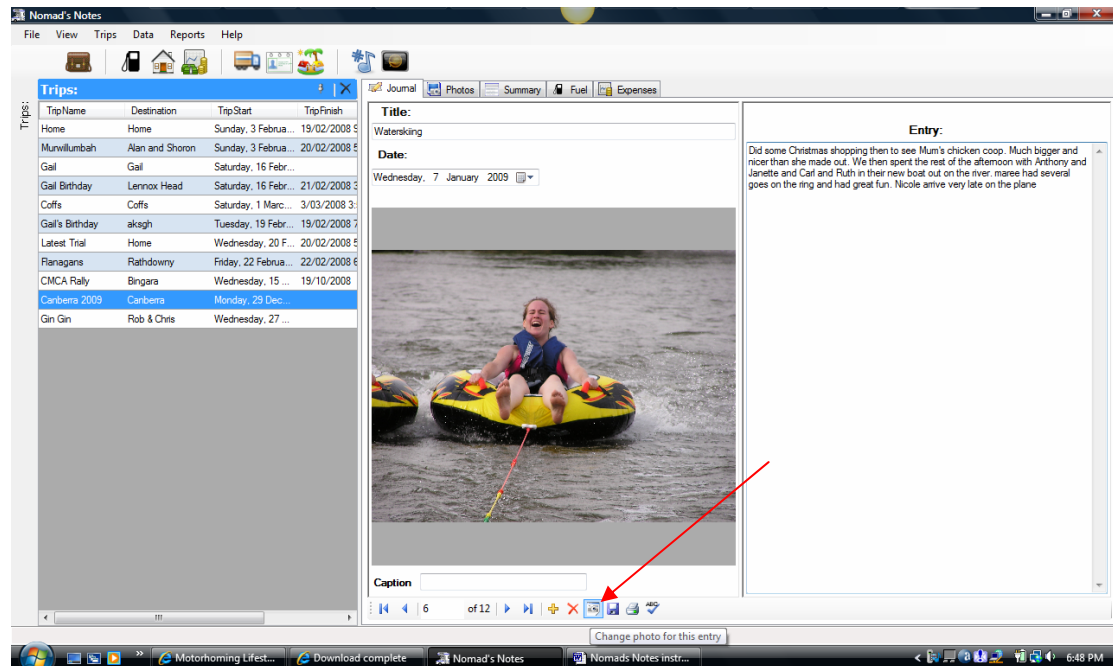
Scroll through the journal entries to find the one you want to edit (see above)

Change the entry

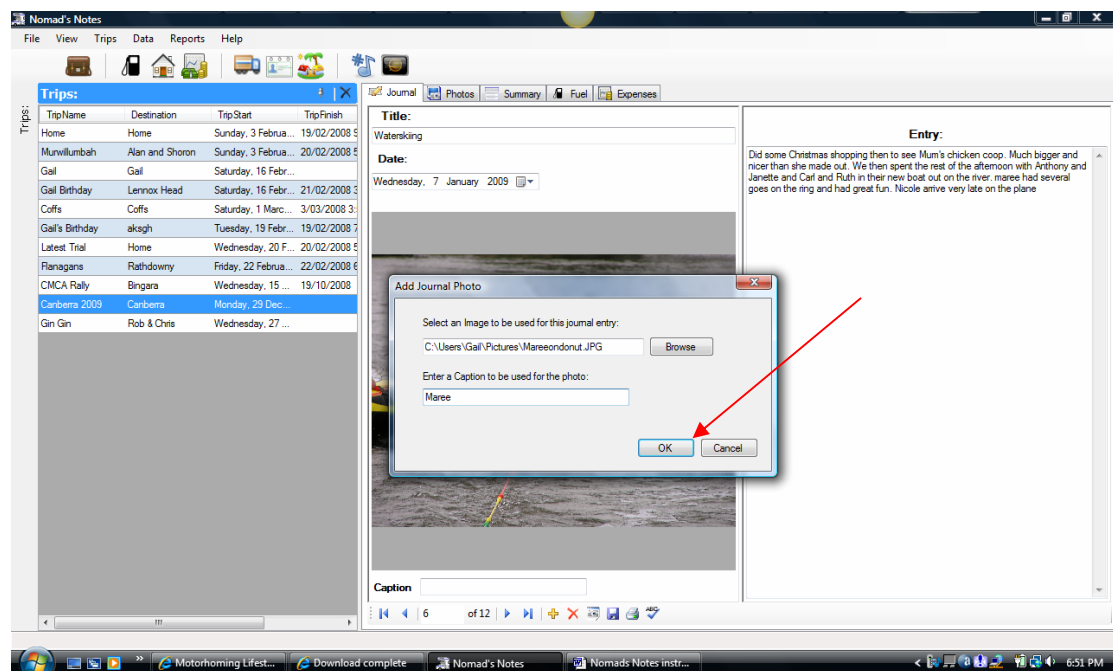
Scroll to the next entry. A dialogue box will open up asking if you want to save your changes. Click **Yes**

Change the Photo on a journal entry

Scroll through the journal entries to find the one you want to edit (see above)
Click on the **Change Photo** icon (4th from the right at the bottom of the screen)



Browse your hard drive for the correct photo
Type in a new caption
Click OK



Inserting a missed Journal Entry

You can not insert a missed journal entry as all entries must be in sequential order. If you want to insert missed entries you can scroll to the Journal entry of the previous day then edit this entry by adding a new paragraph for the new day

Delete a journal entry

Note: Journal entries need to be added in sequential order. If you delete an entry you can not add another in its place. You can only add one to the end. Consider editing rather than deleting

If you still want to delete

Scroll to the Journal entry you wish to delete.

Click on the red **Delete** icon at the bottom of the screen

